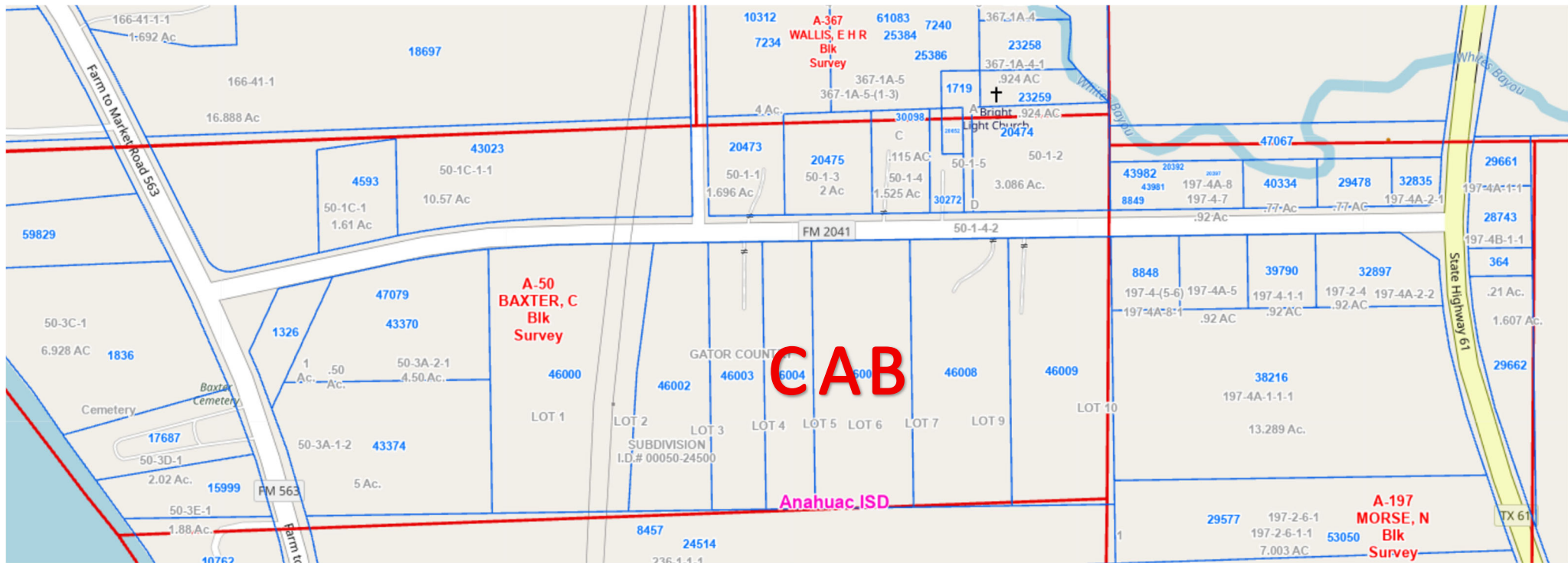


Gator Country



A	P# 46005	2.67 AC	\$102,410	\$38,355/AC	11-8-2023
B	P# 46006	2.68 AC	\$129,700	\$48,395/AC	8-24-2022
C	P# 46004	2.696 AC	$\$635,000 - \$346,830 = \$288,170 / 2.696 =$	$\$106,887/AC$	3-2-2022

New land Schedule RS24500 \$43,300/ac